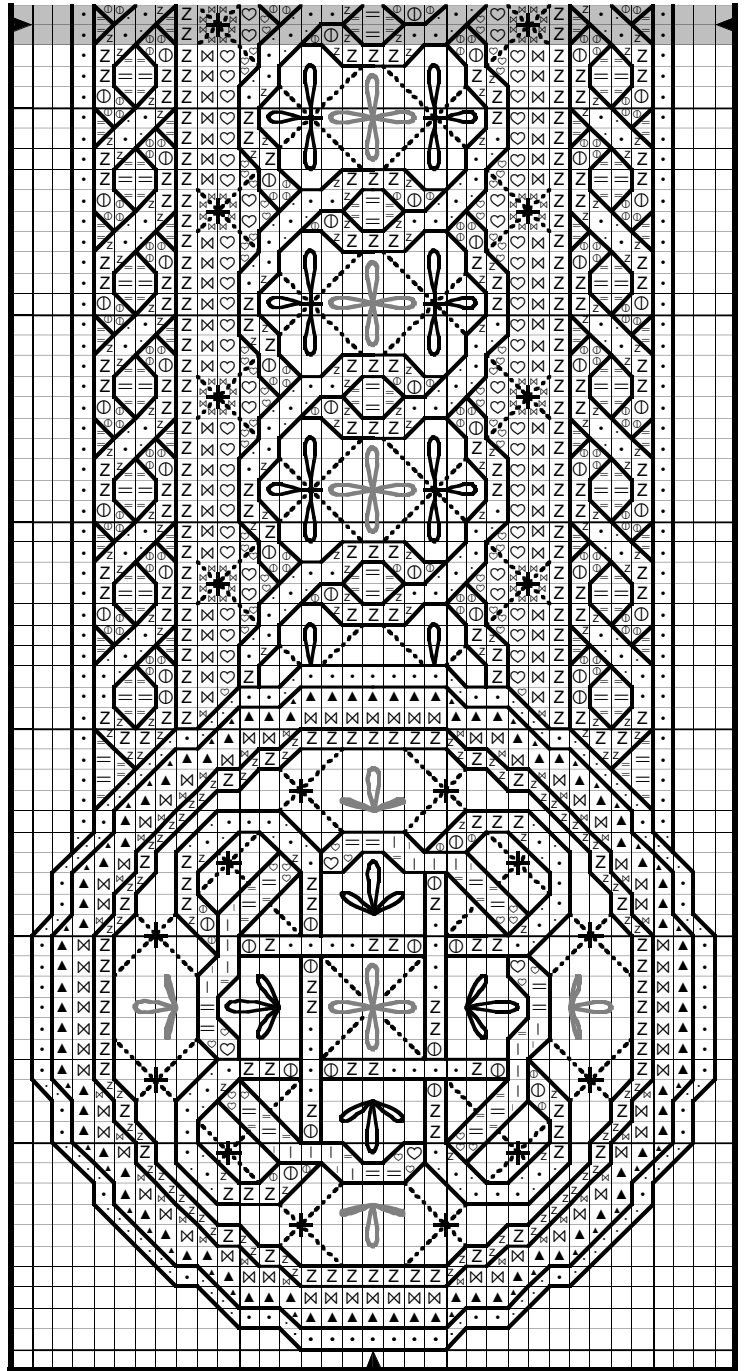
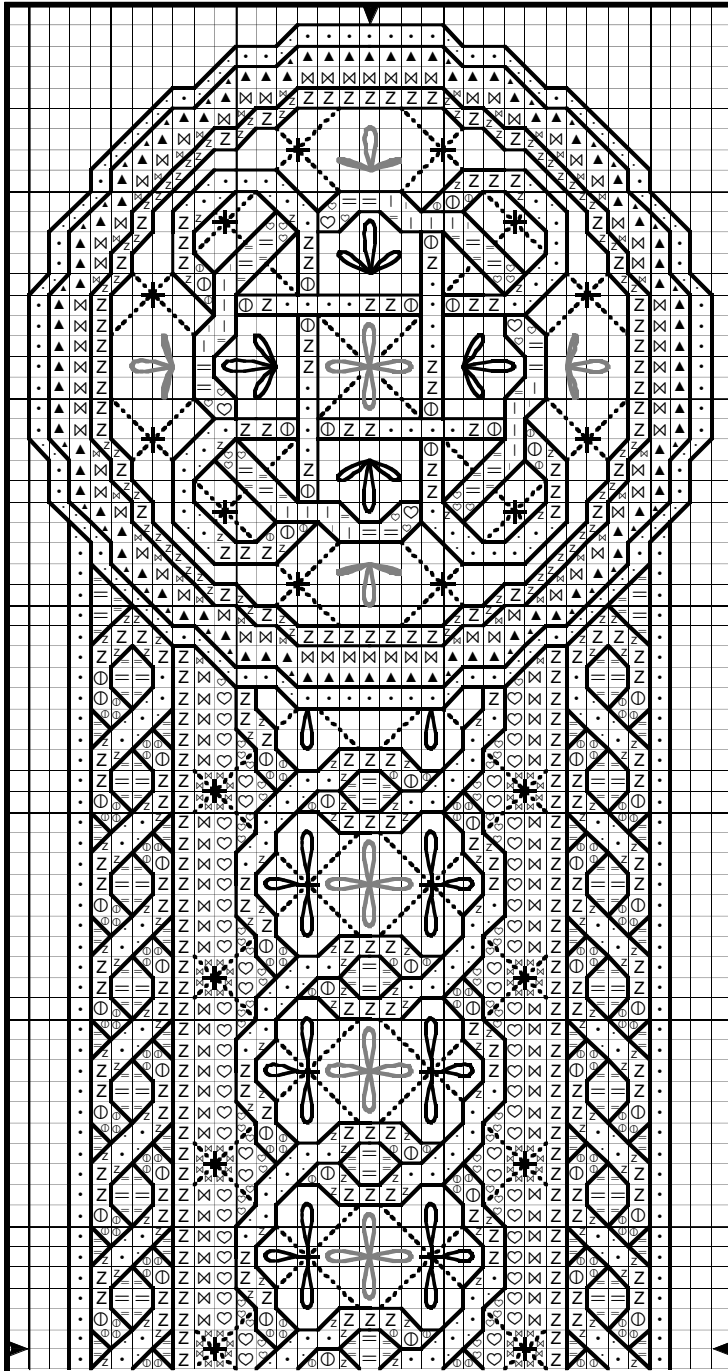


## Renaissance Bookmark

designed by Teresa Wentzler



(shading indicates overlap from previous section)

### COPYRIGHT NOTICE

This is a "complimentary" chart, which means you may photocopy it. You may stitch it as many times as you'd like. Shopowners may give it to customers free of charge. However, since TW Designworks retains ownership of the copyright, **you may not sell this chart, or profit from it in any way!** On behalf of needlework designers, thank you for obeying of copyright law!

# Renaissance Bookmark designed by Teresa Wentzler

	DMC	Anchor	Color Name
•	677	886	old gold, v. lt.
	738	372	tan, v. lt.
Z	676	891	old gold, lt.
	437	362	tan, lt.
⊕	729	890	old gold, med.
	436	1045	tan
bs only	420	374	hazelnut, dk.
	794	117	cornflower, lt.
=	793	176	cornflower, med.
♡	792	941	cornflower, dk.
	793	176	cornflower, med.
⊗	792	941	cornflower, dk.
▲	158	123	cornflower, v. dk.
	791	941	cornflower ult. dk.
	223	894	pink, med. lt.
	3722	895	pink, med.
	3362	861	pine green, dk.
	3363	860	pine green, med.

## Kreinik Metallic Fiber:

002V #4 braid: Vintage Gold

**Stitch Count:** 33W X 128H

**Finished design size:** @ 2-1/3" X 9"

**Fabric:** 28-count cream Glasgow linen from Zweigart®

## General Instructions:

Cross stitch **over-two** using two strands of floss. When two floss colors are bracketed together, use one strand of each color. Backstitch using one strand of floss.

## Special Instructions: (DMC numbers)

**420:** backstitch all gold first!

**158:** backstitch blue rings in circular ends only

## Kreinik #4 braid:

Straight stitch the dotted lines, then "tack" at intersections where indicated on chart using one strand 729.

**223/3722:** (one strand each) make lazy daisy flowers (indicated by grey)

**3362/3363:** (one strand each) make lazy daisy leaves (all others)

**Note:** Regarding the blue "under" the gold braid: You may choose to do full cross stitches instead of the fractional stitches that are charted; it's up to you.

## TW Designworks

Teresa Wentzler

PO Box 176

Montoursville, PA 17754

phone/fax:

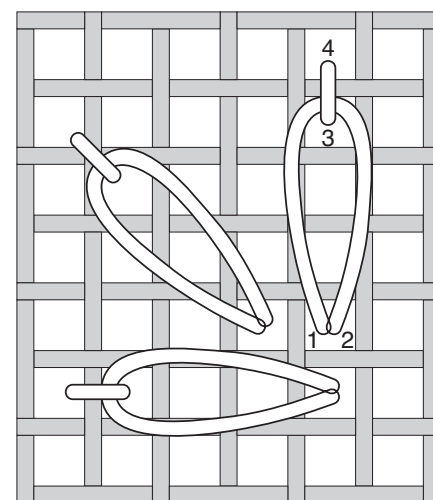
570/433-9979

Web:

www.twdesignworks.com

E-mail:

tlw@microserve.net



lazy daisy stitch

## Notes: Changing the Colorway?

If you would like to change the colors used in this design, you may find the following information helpful.

1. Blue is the main color of the design as charted. If you would like to replace the blue with another color, bear in mind that there are 5 shades of blue: from very dark to light. To preserve the shading used in the design, select another main color (in 5 shades) accordingly. This is the easiest color to change.

2. Gold is used liberally in the given colorway. It is a "warm" color, in high contrast to the "cool" blue. There are 3 shades of gold: dark, medium, and light. There is also a backstitch color which is a shade darker yet. Bear the following in mind if choosing a new color to replace the gold. The gold is used as a "uniting" color in this design: it's found in almost every area, and serves to "tie" all of the design elements together. If you choose to change the gold, your

replacement color should contrast well with the main color. For example, if you decide to make red the main color, the gold would still work well, \*if\* your red leans more toward mauve (cooler) than toward orange (warmer). However, if your red is more orange-y, then you definitely need to choose something "cooler" to contrast more, or definition will be lost, whether or not the backstitch color you choose is very dark! Remember, the shading is very important in this design. This color is the most difficult to change!

3. The pink used in this colorway is an accent color: it gives the design a degree of color balance. Without this contrasting color, the design would be rather boring to look at! When choosing an accent color, it should compliment the main color. For example, the design would not be as interesting to look at if the pink flowers were a "cool" color like turquoise, blue or violet. They would tend to "disappear" visually, and the design would look somewhat "flat". A warmer color like pink, red, salmon or

even orange contrasts with the blue, making the motifs "stand out", adding visual interest (and focal points!) to it.

(NOTE: The motifs using the accent color are "naturalistic" meaning that they mimic something from the natural world...in this case: flowers and leaves. However, it's not necessary that you use naturalistic colors for these motifs if you don't want to!)

4. The metallic gold is an echo of the gold shades used in the design. Because it's used over top of dark areas of the main color, it must contrast well in order to be seen. This color can be changed as long as it meets the high "contrast" criteria.

I hope you'll find these tips helpful. Changing the colors in a design is one way to personalize your stitching and make it truly "yours". So, experiment and have fun!

*Teresa*